

THE



DISTRIBUTOR

Orange County Model A Ford Club

CALIFORNIA EDITION
JANUARY - 1990
VOLUME XXX / ISSUE 1

EDITORS: MARTHA & LES WHITE
PUBLISHERS: BOB & KARYN SITTER

IMPORTANT SPECIAL NOTE

Please check your address label on the outside of this Distributor. Is there a star "*" by your name? If there is a star it means that you have not yet paid your dues, per our records.

Please send them in immediately!!! If there is a question please contact our Treasurer.

The Board has told me that those who have not paid by the end January may not be receiving the next Distributor. I know you don't want to miss the articles and I'm sure you want to receive your Roster in January. We can't print the Roster until you pay your dues. Please help us out with this!!!!

THANK YOU!

INDEX

President.....	Page 1-2
Calendar / Events.....	Page 5
Editor.....	Page 2
Special Events.....	Page 2
Activities.....	Page 3
Christmas Parties.....	Page 4
General Meeting.....	Page 1
Technical Advisor.....	Page 2
Secretary.....	Page 2-3
Classified.....	Page 7
Fashion.....	Page 6-7
Feature Article.....	Page 8
Dues Renewal Form.....	Page 9

New Board Takes Office

MOOSE'S MESSAGE

By Jim Marsh
President

It is with great pleasure that I announce the 1990 Board Of Directors for the Orange County Model A Ford Club Of America. We have three returning Directors, they are: Jim Marsh - President, Terry Lucas - Secretary, Joe Wavra and Paul Steed - teaming up Activities. New to the Board this year are: Wade Roberts - Treasurer, Don Tune will head up the Technical slot, Martha and Les White will be the Distributor Editors, and new to the position of Special Events, (but not to the Board) is the dynamic duo of Joe and Paul.

I look forward to working with all of them in the coming year. I am sure it will be a pleasure!

As I have said before, it takes more than one or two people to run this club, it takes all of us to make our club successful. So, if we need some help, please volunteer your services.

Along with new talent, you always get new ideas. So, we will be looking for new ideas. We already have some new activities in the mill. If anyone has any ideas on how to improve our club or tours, or anything about our club, please let me know and I will take it to the Board and see what we can do about it.

So, as we move into this new decade (I will call it the gay 90's revisited) let's plan to go on more tours this year. Let's give the Wavras and the Ribas some competition for the Kelly Craig Trophie!

Cont. page 2

GENERAL MEETING

Will be held on:
Thursday, January 11, 1990.
At: 7:30 P.M.

Location:
Santiago Elementary School
2212 N. Baker
Santa Ana, Ca.

We will meet at Me and Ed's
Pizza Parlor for a party
after the meeting.
Location: Garden Grove
Blvd., (between Haster and
Harbor).

MOOSE'S MESSAGE CONT.

Thank you too, for your vote of confidence. I will do my best serving as your President this term.

Please join me at the Me and Ed's Pizza Party on Garden Grove Blvd., (between Haster and Harbor) after the meeting.

LETTER FROM THE EDITOR

We are starting a new continuing artical this month that we are sure you will enjoy!

It is our intent to make The Distributor as interesting and informative as possible.

We would like to hear your comments and thoughts. Please feel free to send us any interesting or informative "Tid Bits" that you feel may be of interest to our members.

We look forward to meeting for the first time a lot of new, as well as, old members this year. So let's get Model Aing!

Martha and Les White
Editors

BOARD OF DIRECTORS

President - Jim Marsh
(714) 531-7237

Secretary - Terry Lucas
(714) 633-0390

Treasurer - Wade Roberts
(714) 675-5457
(714) 673-2261

Activities
Joe Wavra (714) 549-2881
Paul Steed (714) 960-7381

Technical Advisor - Don Tune
(714) 832-8239

Special Events
Joe Wavra (714) 549-2881
Paul Steed (714) 960-7381

Editor - Martha and Les White
(714) 870-6417
(714) 772-2284

Publishers - Bob and Karyn Sitter
(714) 777-2486

MAFCA National Membership is required for membership to the Orange County Chapter.

ISN'T THAT SPECIAL

By Paul Steed
co-Special Events Chairman

Well 1989 is history and the 90's are upon us Joe Wavra and I have taken on the added task of Special Events, so far we have a large mall show coming up in a few months at Buena Park Center and also, possibly, at the City Mall. The times and dates will be announced at the general meeting.

I am new at the Mall Shows and Special Events aspect of our club so I would really appreciate any help. The mall shows and Special Events are what supply this club with the funds that are necessary to function.

Looking forwards to the 90's - Lets pull together.

BOARD MEETING

By Terry Lucas
Secretary

DECEMBER 1989 - The meeting was called to order at 7:45p.m. In attendance were Jim and Bev Marsh, Terry and Joan Lucas, Les and Martha White, Jim Kahlaf, Bob Kelley, Lou and Pearl Spielberger, Paul Steed, and Don Tune. Secretary and Treasurers reports were approved as read.

Don Tune volunteered his wife Linda, to assist with the upcoming audit of the treasury. Two other volunteers are still needed.

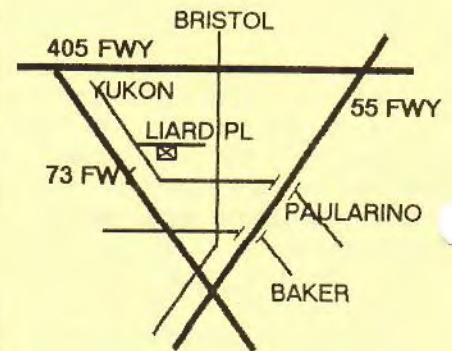
Paul Steed reviewed the activities on the calendar for 1990. In the future the Activities Director will attempt not to schedule events on the same day as swap meets.

Cont. Page 3

TECHNICALLY SPEAKING

By Don Tune
Technical Advisor

There was no seminar in December because of the holiday activities. The January seminar will cover generators and starters. We will be trouble shooting, disassembling, and rebuilding, including turning commutators, straighting starter shafts, correcting generator polarity, making generator output adjustments, ect. So bring your troublesome starters and generators or just come and socialize. The seminar will be hosted by Dick and June Riha.



DICK AND JUNE RIHA
901 LIARD PL
COSTA MESA
(714)556-4355

Handy Hints:

An inoperative generator may be caused by lost or reverse polarity. The fix is very simple. Come to the seminar and learn how.

*Footnote from the Editor:

We are starting a letter to the Advisor Column next issue. Please send your questions, problems, and "stumps" to the Advisor.

Don Tune
10615 Equestrian Dr.
Santa Ana, CA 92705

BOARD MEETING CONT.

The annual problem of late dues comes up again. Members are encouraged to pay their dues promptly. To be in the 1990 Roster dues must be paid by the end of January.

Technical Director, Don Tune announced that the next seminar will be on starters and generators. It will be held at the Riha's home on January 12th at 7:30p.m.

Terry Lucas will contact John Hargrove, the National Judging Standards Chairman, for information on Classifications of Judging for upcoming National Shows in San Diego. Terry will report his findings at the January General Meeting.

The upcoming National Show will offer swap spaces of 18' x 24'. The cost of the space for five days is \$50. Terry Lucas made a motion that the Orange County Chapter purchase a space for members to use as needed - (Model A Parts Only and membership applications). Paul Steed seconded the motion and the motion passed unanimously.

Martha White made a motion to apply for a bulk rate mail permit. There is no charge for non-profit organizations, but there are minimum mailing requirements. There was no second and the motion was tabled until the next board meeting when Martha will bring more information on the matter.

The National Club offers to Chapters a copy of the Roster of all past issues available. And to be permanently put on the mailing list for a Orange County MAFCA Library, for a one time charge of \$20. Terry Lucas made a motion that we send \$20. to the National and accept this offer. Paul Steed seconded. The motion was

passed by a majority. Meeting was adjourned at 9:50p.m. The next Board Meeting will be held on January 18th at 7:30p.m. at the Tunes home.

Respectfully Submitted.

ONE FOR THE ROAD

By Paul Steed
co-Activities Chairman

Well if you missed our Christmas Light Tour you really missed it! I can honestly say that I haven't had such a special time for Christmas since I went Christmas caroling as a teenager.

We had quite a large group meet at the Marsh's. Before the A's hit the road, we were put into the Christmas mood by Keith Brush and his guitar, singing Christmas carols. Next 8 A's and a hand full of moderns trecked off to the land of eluminated madness, led by Jim Marsh and Harriet.

Upon our return to the Marsh's house, a very enjoyable evening of caroling, refreshments, and enjoying the company of good friends.

PS Dennis has a vile, vile!

Our upcoming tours include a tour on January 21 to the Budist Temple in Hacienda Heights. People come from all around the world to see this magnificent Temple. It is considered a great work of art. We will be given a special, exclusive, private guided tour.

A Vegetarian lunch will be served at a cost of \$5., per person. Advanced reservations are required for lunch. Contact Paul Steed by phone, or in person no later than the January General Meeting. We will meet at the Mall of Orange, departure time 9:00a.m. sharp.

PAGE 3

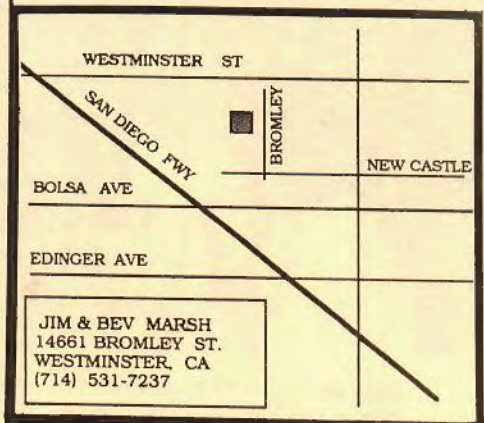
We will be touring to San Diego on January 14, to meet with the Queen Mary Chapter for planning on the National Convention. Ladies are invited to attend, as well as the men. We will be planning OUR volunteered portion of the Convention, men the repair tent, ladies the assisting of registration. We will tour from Coco's in El Toro, departure time: 8:00a.m. sharp. Come at 7:00 and join us for breakfast. After the meeting we will be taking in the Zoo or possibly the Museum (depends on the groups choice).

February 16,17,18,19, will be our tour to Death Valley, we have had some positive response from some other clubs and may have some new faces along. The desert this time of the year is great, so make reservations with Joe Wavra and have "A" time.

March 11 will be our Annual Pancake Breakfast at good old Hart Park in Orange.

March 23, 24, 25, will be the 2nd Annual tour of Laughlin, Nevada. This is one tour you shouldn't miss as it will be attended by A's from California, Arizona, Nevada, and other states.

JIM & BEV MARSH



This is the year of the San Diego National Convention. Lets all gear up to help make it a good one!



Clowning Around - L TO R - Joe Wavra, Bob Kelley, Les White, Paul Steed, Jim Marsh, And Bev Marsh.

1989
Christmas Party

It was a fun party!
What more can we say!
Special Thanks to Pete Gruenbeck who spent his time at the party playing music for the rest of us!



Sober Moment - A few of the Party goers. In spite of the apparent moment, everyone had a good time.



Our Member of the Year - Joe Wavra having just received his award, at the 1989 Christmas Party.



Out Going 1989 Board - L to R - Lou Spielberger, Jim Kahlif, Terry Lucas, Les White, Paul Steed, Joe Wavra, Jim Marsh, (not pictured) Bob Kelley. Thanks guys for a great 1989!!!

Family Christmas Party

The Family Christmas Party was a great success. Everyone left with belly aches for all the laughter. Poor, Vince, no one could have guessed it would be in the egg! Sorry we missed out on printing this photo.

A very Special Thank you to Ed Nemitz, who stepped in to play Santa for us at the last minute.

CALENDAR

JANUARY 1990

SUNDAY MONDAY TUESDAY WEDNESDAY THURSDAY FRIDAY SATURDAY

	1 New Year's Day	2	3	4	5	6
7 Pomona Swap Meet at Fairplex	8	9	10	11 General Meeting 7:30 pm Santiago	12 Technical Seminar Riha's 7:30 pm	13
14 Tour to Queen Mary National 7:00 am	15	16	17	18 Board Meeting 7:30 pm Marsh's	19	20
21 Budist Temple Tour Restorers Swap Meet	22	23	24	25	26	27 Turlock Swap Meet
28 Turlock Swap Meet	29	30	31			

21 SUNDAY - Jackson Cascades Chapter VMCCA Swap Meet in Jackson, Michigan. For info: Don Schafer, 1006 S. Webster St., Jackson, MI 49203 (517) 784-6808.

FEBRUARY

16, 17, 18, 19 FRIDAY-MONDAY - Death Valley Tour. Call Joe Wavra for reservations: (714) 549-2881.

18th SUNDAY - Pomona Swap Meet at Fairplex. For info: (714) 547-5257 or (714) 836-7892.

NATIONAL EVENTS

17, 18th SATURDAY, SUNDAY - AACA Vintage Auto Club Palm Beach Region's 24th Annual Pioneer Days Antique Auto

Show and Swap Meet, show car judging Sunday, in West Palm Beach, Florida. For info: at Gentry, 6507 Patricia Dr., West Palm Beach, FL 33463 (407) 689-6699.

MARCH

11th SUNDAY - Pancake Breakfast.

23, 24, 25, FRIDAY- SATURDAY - Laughlin Tour.

NATIONAL EVENTS

29th THURSDAY - Model A Ford Foundation Trustees executive meeting, 9:00a.m. - 12:00p.m. and Model A Ford Foundation general meeting, 1:00p.m. - 5:00p.m.

JANUARY

7th SUNDAY - Pomona Swap Meet at Fairplex. For info: (714) 547-5257 or (714) 836-7892.

11th THURSDAY - General Meeting 7:30 p.m. At Santiago Elementary School (see map). Party after meeting at Me and Ed's Pizza Parlor, on Garden Grove Blvd., (between Haster and Harbor).

12th FRIDAY - Technical Seminar on Generators and Starters. At the Riha's (see map).

14th SUNDAY - Tour to Queen Mary Chapter. National Convention Planning. Depart Coco's in El Toro at 8:00a.m. sharp. Come at 7:00a.m. for Breakfast.

18th THURSDAY - Board Meeting at the Marsh's, 7:30 p.m. (see map).

21st SUNDAY - Budist Temple Tour. \$5. Lunch RSVP. Depart Mall of Orange 9:00am sharp.

21st SUNDAY - Model A Swap Meet. At El Camino College, 3400 Manhattan Beach Blvd., Torrance. 6:am - 3pm. North side of college between Crenshaw and Prairie. For info: (213) 425-8747/ 438-6239

27 & 28 SATURDAY & SUNDAY - Modesto A's 24th Annual Swap Meet in Turlock, CA., at the Stanislaus County Fairgrounds. For info: (209) 869-2616.

NATIONAL EVENTS

6th SATURDAY - Flying Quail Antique Car Club's 16th Annual Swap Meet in Fostoria, Ohio. For info: Jerry Weikert, 1358 Joseph Rd., Fostoria, OH 44830 (419) 435-7040.

12, 13th FRIDAY-SATURDAY - Wichita A'S 15th Annual Sunflower Swap Meet in Wichita, Kansas. For info: Wayne Orr, 1718 Cheryl, Wichita, KS 67212 (316) 722-7324.

13th SATURDAY - Falls City Model A Club's 16th Annual Winter Swap Meet in Louisville, Kentucky. For info: Jim Morrison, 1821 Lewiston Pl., Louisville, KY 40216 (502) 447-6464.

21st SUNDAY - Northern Ohio Region MARC/MAFCA's 15th Annual Swap Meet in Medina, Ohio. For info: Al Sparrow, 3810 Wod Ave., Parma, OH 44134 (216) 884-2444.



A-LINES

LECHO DE PARIS

LECHO DE PARIS



No. 5232. A tailored frock in two shades of linen is smart, also cool and easy to launder. Size 12, waist, requires 1½ yards 40-inch material; skirt and bindings, 1¼ yards 40-inch material.

No. 5096. The plain linen suspender skirt with guimps of printed linen, for sports wear, is the ideal of the young girl. Size, 12, guimps, 1¼ yards 32-inch; skirt, 2¼ yards 32-inch.

No. 5291. Printed silk, Summer's prime favorite, made with low square neck and with arm-bands instead of sleeves provides a dainty frock. Size 12 requires 2¾ yards of 36-inch material.

No. 5153. Angora jersey with batiste collar and cuffs is a combination suitable for the cooler days at mountains or seashore. Size 12, 2¼ yards 40-inch material; contrasting, ½ yard 36-inch.

No. 5096. Here, a jacket developed in Summer velvet is used to top a frock of silk; a charming combination for sports wear. Size 12, dress, 2¼ yards 40-inch; jacket, 1¾ yards 40-inch.

No. 5163. Printed rayon voile interprets the mode in this frock; bindings of the predominating color, and white collar complete the ensemble. Size 12, 2¼ yards 40-inch; collar, ¾ yard 36-inch.

No. 5202. Rose linen with collar and cuffs of white combine to make a tailored frock of smart simplicity. Size 12 requires 2¼ yards of 32-inch material; contrasting, ¾ yard of 36-inch.

No. 5113. A chic costume of silk with pleated skirt and jacket front, of the upper front being of a contrasting color. Size 12 requires 2¾ yards 40-inch material; upper front, ¾ yard 40-inch.

No. 5281. Georgette comes into its own in this charming party frock with the draped skirt sections and crosswise tucks, all of which it takes so gracefully. Size 12, 3¼ yards of 32-inch material.

No. 5151. This sports frock of printed and plain linen introduces the suspender skirt, always an attractive model for a young girl. Size 12 requires 1¾ yards 32-inch; waist, 1½ yards 32-inch.

Patterns may be bought from all McCall dealers, or by mail, postage prepaid, from The McCall Co., 236 West 37th St., New York City, at prices listed on Page 96.

Patterns may be bought from all McCall dealers, or by mail, postage prepaid, from The McCall Co., 236 West 37th St., New York City, at prices listed on Page 96.

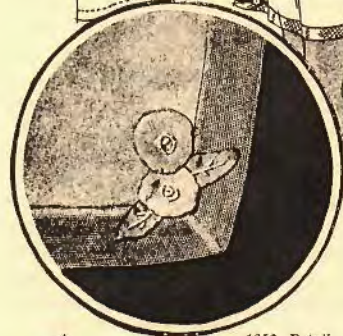
If your Junior Miss Dreams of becoming "Miss Teen Model A" at the convention in San Diego, this summer of 1990, perhaps she would like to see what Miss Teen of 1928 was wearing that summer. These young miss fashions were reprinted from the June 1928 edition of McCall's Magazine. Thank you to Linda Tune to whom this collection belongs.

Pastel Silks for Lingerie Applique

by Elisabeth May Blondel

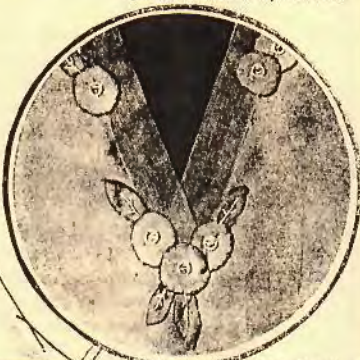


1653. Motifs applied to separate vest and panties —assembled bits of orchid, pink, blue and green crepe de chine.



No. 1653. A set of silk underwear such as this will delight the woman of conservative taste who is also fastidiously dainty regarding small details of design and finish. Therefore these motifs for appliqué in silks of four pastel shades, orchid, pink, blue and green, will answer and satisfy her demands perfectly. The silk applique pieces are of an excellent quality of crepe de chine, and the colors will blend with garments of any fashionable shade, flesh, peach, orchid, etc. There are enough pieces to trim any three garments, such as costume slip or nightgown, vest and panties. The net footing used as a partial background for the patches adds an air of French chic to the set. Diagrams for cutting the four garments will be of interest.

1653. Detail of pantie corner.



1653. Detail of nightgown front, and below, of costume slip.



Patterns may be bought from all McCall dealers, or by mail, postage prepaid, from The McCall Co., 236 West 37th St., New York City, at prices listed on Page 96.

1928 Lingerie - The silk applique is made of crepe de chine, found in today's fabric shops. These garments can be easily made using a soft satin fabric, as well as 2 widths of contrasting satin ribbon. Shoulder straps may also be made with a narrow strip of satin ribbon. Satin was a very popular fabric for lingerie in the 20's and 30's.

This New STOCKING by LUCILE-PARIS and HOLEPROOF



HERE, in Lucile's salon on the Rue de la Penthièvre, both Parisienne and world traveler come to find the ultimate in fashion; for Lucile is arbiter of the mode. Lucile, herself, creates new hosiery colors for Holeproof in Paris.



SURPASSING any former Holeproof fashion achievement, this new stocking —48 gauge, picot edge French-clocked —is truly exquisite. You've never seen anything so alluringly transparent! And Holeproof has translated Lucile's colors with artful accuracy.



THE AMERICAN STOCKING vogue is sweeping Paris! Lucile's patrons now demand the new, French-designed, American made hose! Here, in a selected corner of Lucile's atelier, smart French women choose the latest Holeproof stockings.

Of all fine stockings Holeproof alone can offer you Lucile's Paris colors recreated in stockings known the world over for their exquisite sheerness and chic. Priced from \$1.00 to \$2.95. A lovely Lucile special number at \$1.95.

Holeproof Hosiery

Candy Making Pays Big

Makes \$25.00 to \$100.00 weekly. Candies cost 1¢, sell for 60¢ a lb. Almost no cash capital needed. Start in home, sell to stores. Ladies or men. Practical money making plan. Teach (by mail) by successful 25 years successful experience. We furnish tools. Societies: F.I.C., Central Candy School, Dept. 2-2706, Washington, D. C.

ORANGE COUNTY CLASSIFIED ADS

VACATION RENTAL
BIG BEAR LAKE, CABIN 3 BDR, SLEEPS 6. SPECIAL RATES FOR CLUB MEMBERS.
CALL: MYKE WINGETT
(714) 542-3089 AFTER 6 P.M.

WANTED
ENCLOSED CAR TRAILER
CALL: TERRY LUCAS
(714) 633-0390

FOR SALE
MODEL B ENGINE, BB CRANK SHAFT, INSERTED RODS, ASKING \$450.
CALL: LARRY MCKINNEY
(714) 963-2724

SUPERFLUOUS HAIR?

NU-ART

Destroys it — with the roots. No pain. Harmless. Guaranteed. Only \$1.00. Good stores or use SPECIAL OFFER coupon
DELFIN, INC. Dept. 751, Mark X South Orange, N. J. If C.O.D.
Send me FREE, as a special offer, a 50c. tube of DELFIN Massage Creamy and a 25c. tube of DELFIN Deodorant, and a six months supply of Skin Tonic. Also NU-ART for which I enclose \$1.00.
Name _____
Address _____
City & State _____

presto! it's gone!

5-ROOM HOME \$498

GARAGES \$87.00 and up

Many Sizes and Designs — All Materials Ready-Cut. We Pay Freight



The ALADDIN CO. [Mail this Coupon]

Bay City, Mich. - Wilmington, N. C. - Portland, Ore.
Send me your Free Book of Homes and Garages, No. 580.

Name _____
Street _____
City _____ State _____

Maternity STYLE BOOK FREE

MATERNITY apparel with no maternity look. Dresses, coats, corsets, underwear. Clever designing provides ample expansion and conceals condition. Also, apparel for baby. Style Book sent FREE.

Sane Bryant Address Dept. 91 39th St. at Fifth Ave. New York

NO MORE PAIN

Amazing relief for you. Stops burning, aching, tender, swollen, calloused, torturing foot. Foot trouble mastered in marvelous CAL-O-CIDE. Wear shoes you like. One application of CAL-O-CIDE and corns and callouses gone like magic. At druggists, or send 35c. MEDCO CO., Dept. A Dayton, Ohio

Cal-o-cide FOOT REMEDY

Editor's Note:

The following article from The Country Gentleman will be a featured article through the coming months. Although a much debated issue, we feel certain that you will enjoy this continuing article.

PUBLISHED ONCE A MONTH BY
THE CURTIS PUBLISHING COMPANY
Independence Square, Philadelphia, Pennsylvania, U. S. A.
CYRUS H. K. CURTIS
Founder and President from 1883 to 1922
GEORGE H. LORIMER, President
WALTER D. FULLER
First Vice-President and Secretary
PHILIP S. COLLINS
Vice-President and Treasurer
JOHN A. WILLIAMS
Vice-President
FRED A. HEALY
Vice-President and Advertising Director
CHARLES C. REE
Country Gentleman Advertising Manager

The Country Gentleman

The OLDEST AGRICULTURAL JOURNAL in the WORLD
A Consolidation of *The Grasses Farmer*, 1831-1839, and *The Cultivator*, 1834-1845

Title Registered in U. S. Patent Office and in Foreign Countries
Copyright, 1923, by The Curtis Publishing Company in the United States and Great Britain
Published on the Third Tuesday of the Month Preceding its Date

PHILIP S. ROSE, Editor

THOMAS C. PANTON, E. H. TAYLOR, ELIZABETH DIMSMORE,
ROBERT H. REED, CAROLINE B. KING, L. A. NICHOLSON,
BEN HIBBS, Associate Editors

By subscription to United States and Possessions \$1.00 for Three Years, Single copies, 25c. To Canada (including postage) 25c. to Newfoundland and Labrador, Argentina, Bolivia, Brazil, Chile, Colombia, Costa Rica, Cuba, Dominican Republic, Ecuador, Guatemala, Haiti, Mexico, Nicaragua, Panama, Paraguay, Peru, Republic of Honduras, Salvador, Uruguay and Venezuela, \$1.00 for One Year; \$2.75 for Three Years. To all other Foreign Countries, \$1.50 for One Year; \$4.50 for Three Years. Remittance to be by Postal or Express Money Order or by Draft on a bank in the U. S., payable to U. S. \$ funds. All subscription prices are subject to change without notice.

Entered as second-class matter July 7, 1911, at Post Office at Philadelphia, Pennsylvania, under Act of March 3, 1879. Entered as second-class matter at the Post-Office Department, Canada.

Vol. CIII

PHILADELPHIA, PA., SEPTEMBER, 1933

No. 9

A GENERATION ago one of the grand old men of American agriculture tried to make a dream come true. It was in 1906 that Dr. Harvey W. Wiley, then chief chemist of the United States Department of Agriculture, began his crusade to interest farmers in the production of industrial alcohol for their own use. He hammered at Congress until he got an appropriation to erect a model farm distillery, brought in agricultural leaders from the states and counties, sent them back home to teach rural folks how to make their own liquid fuel.

For three years Harvey Wiley worked tirelessly, but at the end of that time he admitted defeat. In the preface to a final bulletin, summarizing the information which he had assembled, he remarked simply, rather sadly, that "not a single industrial alcohol distillery exists on an American farm today." And when I asked some of the older research men of the Department why Dr. Wiley had failed, their answer was brief, succinct: "Blackstrap molasses." The big plants on the Atlantic seaboard, extracting alcohol from cheap blackstrap—a by-product of the Cuban sugar refineries—offered competition which small one-man distilleries could not meet.

During the decade that followed, the motor car arrived on a nation-wide scale, providing a tremendous market for liquid fuels, but coincidentally fabulous new oil fields were tapped. Alcohol as a possible motor fuel retreated into the limbo of theoretical things.

In the early 1920's, however, with automobile production climbing to fantastic levels, petroleum development for a brief period failed to keep pace, and the price of gasoline soared. Among automotive engineers there was much speculation about the possibility of using alcohol as a motor fuel, and for a time an alcohol-gasoline blend was sold at filling stations in and around Baltimore. The demand, however, was slight, and in less than a year the new fuel was taken off the market.

But the alcohol question is one which stubbornly refuses to stay on the shelf. Another decade has drifted past, and the issue is back with us again, more buxom than ever.

Shall We Grow Motor Fuel? By BEN HIBBS

DECORATIONS BY EDWIN F. BAYHA
**The Corn Belt Makes
its Own Test**

There is nothing timid about the present alcohol proposal. By the simple expedient of placing a stiff Federal tax on all unblended gasoline, the proponents of the plan would force the use of alcohol-distilled from domestic agricultural products—in the entire 15,000,000,000 gallons of motor fuel which the American public consumes in

a year's time. As originally conceived by Paul Beshers, a canning factory chemist of El Paso, Illinois, the plan calls for a 10 per cent blend, which, it is estimated, would create a market for 1,500,000,000 gallons of alcohol—the manufacture of which would require some 600,000,000 bushels of corn or its equivalent in other farm products.

First publicized by civic clubs, the Beshers plan soon caught the attention of the Corn Belt press, and in a trice the issue was deep in politics. The petroleum people and motorist's organizations grew alarmed, made investigations, began to issue statements. Implement and fencing concerns, hungry for a better farm market, got into the fight. Farm groups went to bat, the commercial alcohol distillers became interested.

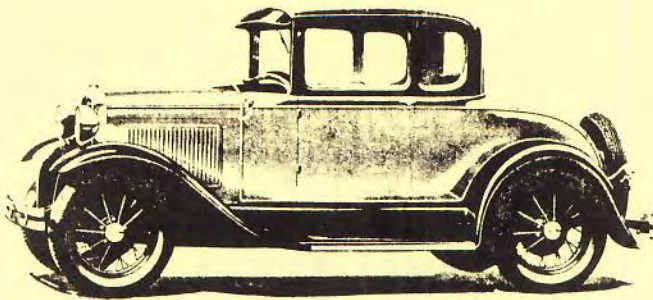
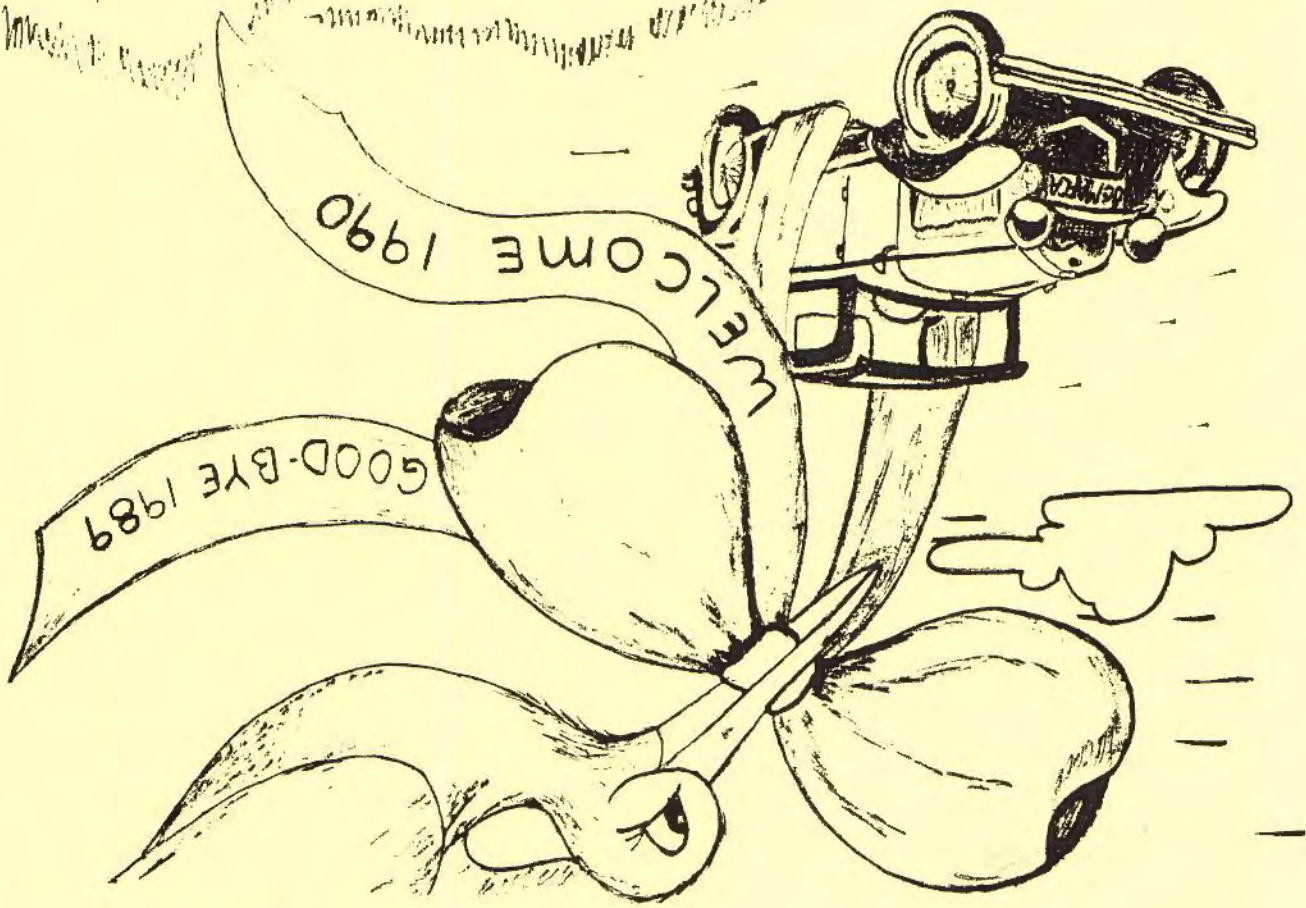
To cap the thing off, the Illinois Agricultural Association, through the Illinois Farm Supply Company, a large retailer of gasoline, conducted a three-months' practical test, sold approximately 1,000,000 gallons of 10 per cent blended fuel to Illinois motorists. The consumers who paid a three-cent premium price—kept written records, submitted almost unanimously enthusiastic reports. Meantime other independent dealers in Illinois, Iowa and Nebraska began to market alcohol blends and found the new fuel surprisingly popular.

A FIGHT PROBABLE AT WINTER SESSION

Bills were introduced in several Corn Belt legislatures to force there use of blended fuels in those states, narrowly missed passing in Iowa and South Dakota. But during the spring months the advocates of the plan transferred the fight to Washington, and on May first measures were introduced in the House and Senate to compel the use of alcohol on a nation-wide scale—beginning with a volume of 1 per cent the first year and ranging up to 5 per cent of the total gasoline consumption by 1935.

To be continued next issue.





MAFCA
ORANGE COUNTY CHAPTER
POST OFFICE BOX 10595
SANTA ANA, CA 92711

First Class Mail